



PLATE 01 · FRONTISPIECE

ARCHIVAL MONOCHROME · 2026

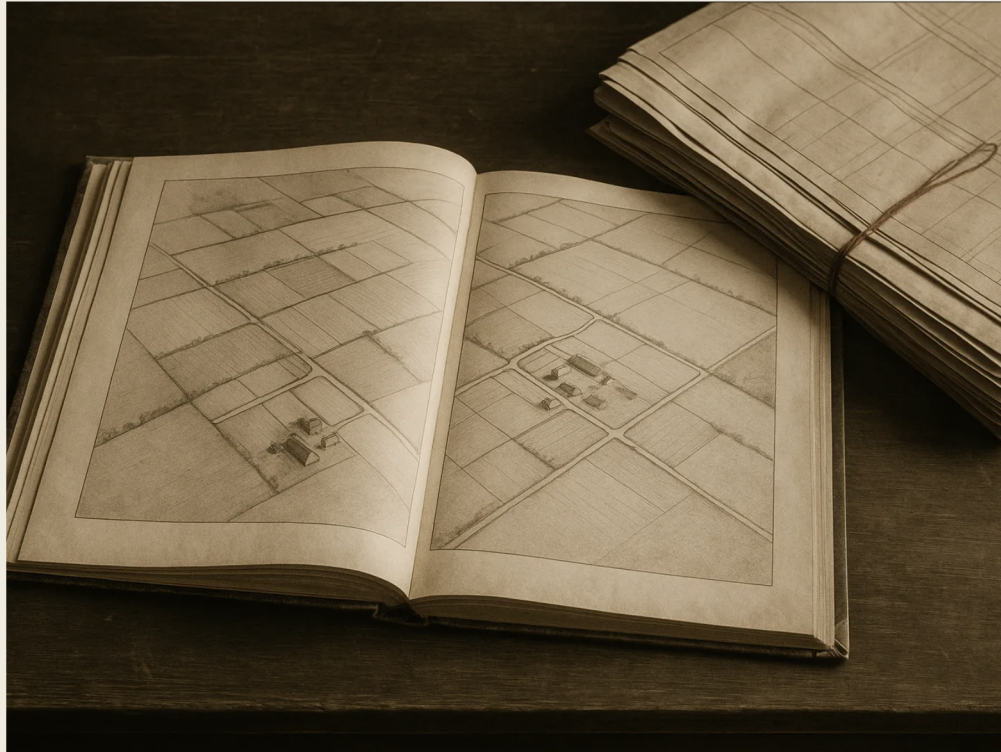


FIG. 1 · THE LIBRARY, OPENED

VOL I · ED. 2026

¶ I · THE LEAD

A library of blueprints to heal the planet.

marginalia · centralised food broke the planet; decentralisation rebuilds it; we open-source what works.

SPEC. 01A VOLUME I · 12 PL.
SPEC. 01B IMPRINT HILLVIEW
SPEC. 01C EDITION 2026 · ST.5
SPEC. 01D BENCH WEC · PNTG

FIG ¶ I · FRONTISPIECE · A
BROADSHEET FROM HILLVIEW ·
FE UNIVERSE, ED. 2026

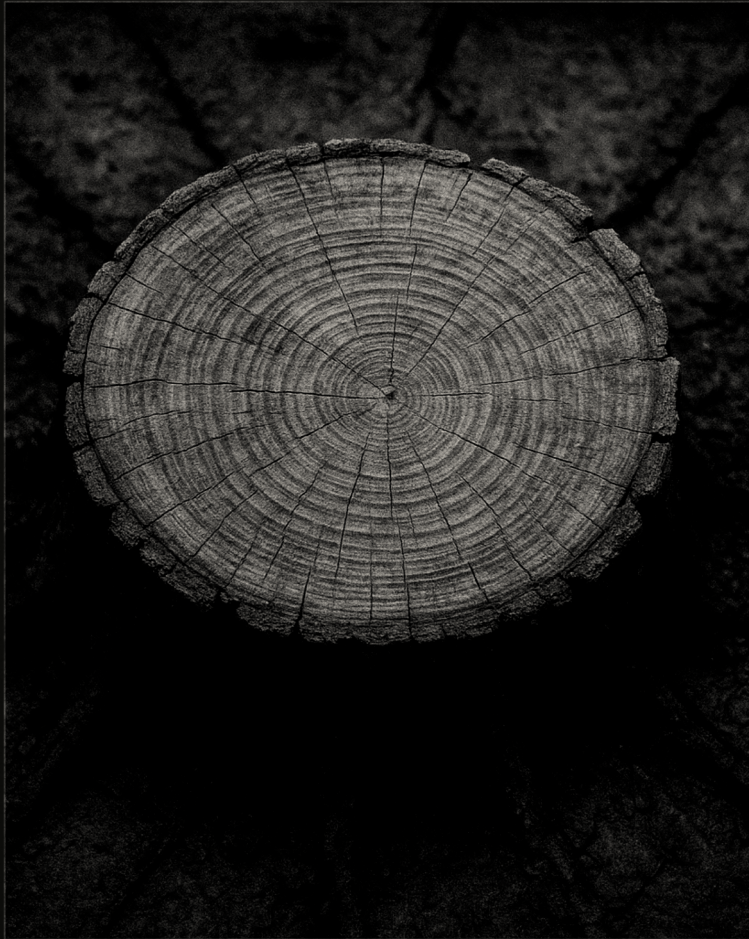


PLATE ENGRAVING · FIG. 2 · THE CUT

¶ I · THE WOUND

Centralisation broke the planet — its food, its carbon, its land — and capital and soil went their separate ways.

marginal note - the centralisation thesis: when food, capital, and land each chase their own optimum, the planet pays the rent.



FIG. 3

LIBRARY

What if every farm could read every other farm's playbook?

And what if the network itself — the library of every blueprint that worked — were the asset; not the farm, not the deal, but the read-write trust between them.

The decentralisation thesis, re-stated for 2026: open the playbook, compound the practice, own the protocol. The library is the moat.



Fresh Earth is a new system for regenerative farmland — and the open library of blueprints that lets it scale. Measurable, profitable, yours.

marginalia · the skeleton is the contract; the library is the proof; the buyer is everyday.

- SPEC. 04A SYSTEM CMF V1
- SPEC. 04B LIBRARY OPEN · IP
- SPEC. 04C CAPITAL WHOLESALE
- SPEC. 04D OUTCOME MEASURED

FIG III · SAATCHI POSITIONING SKELETON · APRIL 2026 · LOCKED

THREE MOVEMENTS



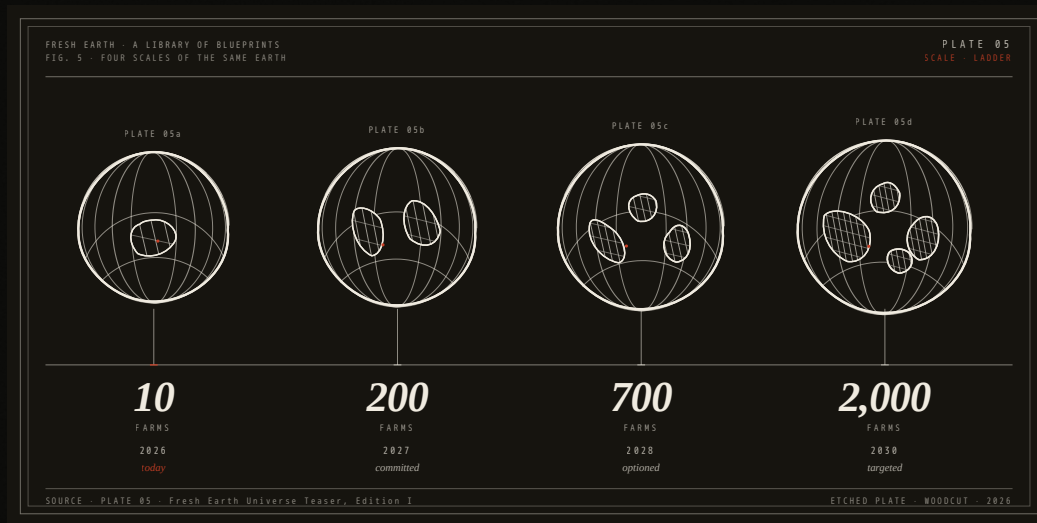
i.
SYSTEM
a measured way to farm



ii.
LIBRARY
a public document trail



iii.
CAPITAL
aligned to outcomes



IV · THE NETWORK IS THE ASSET

Ten farms is the proof. Two thousand is the protocol. The decade between is the work.

specimen · ten farms today, two hundred by year-end, seven hundred at audit, two thousand at scale – every farm reads the open library and writes back into it.

SPEC. 05A	COHORT	10 · 2026
SPEC. 05B	STATE	200 · 2028
SPEC. 05C	NATION	700 · 2032
SPEC. 05D	PROTOCOL	2,000 · 2035

FIG V · ETCHED-GLOBE SCALE LADDER · FE UNIVERSE, EDITION I · INDICATIVE

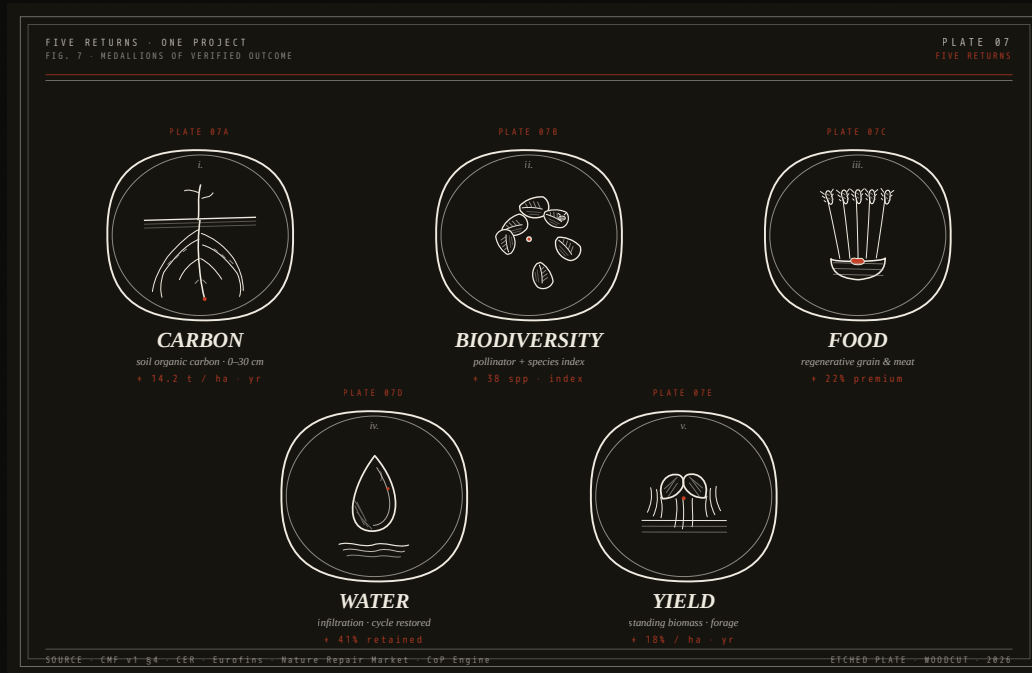
DISCLAIMER · Forward-looking – indicative only. Wholesale investors only (Corporations Act s708(8)/(11)). Capital is at risk; past performance is not indicative of future results (RG 170). Read the Information Memorandum.

*Carbon. Biodiversity. Food. Water. Yield.
Five outcomes, one paddock — each one
carries a dollar tag and a verification tag.*

marginalia · one paddock measured
five ways. Carbon, biodiversity,
food, water, yield — every
blueprint compounds the next.

SPEC. 07A	CARBON	T/HA · ACCU
SPEC. 07B	BIODIVERSITY	SPECIES · BAM
SPEC. 07C	FOOD	KG/HA · BFA
SPEC. 07D	WATER	ML · NRAR
SPEC. 07E	YIELD	\$/HA · LIVE

FIG ¶ VII · FIVE-OUTCOME COMPOUNDING DIAGRAM · CMF V1 §7 · AUDITED APR 2026



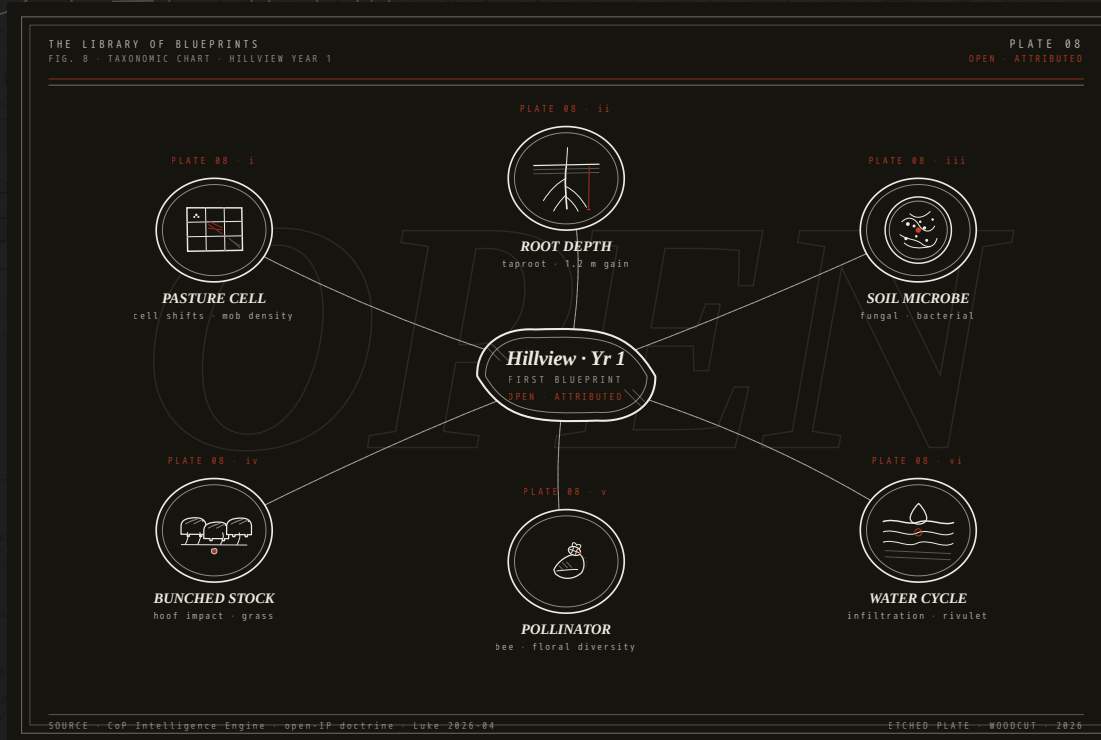
VII · THE HERO PLATE · THE ASSET

*We open-source what works.
The reader becomes the **builder**.*

VIII

PLATE
VIII · THE LIBRARY
NODES
6 PLATES · 7 FARMS

READS
21 IP EDGES
STATE
OPEN · ATTRIBUTED



*A practice change becomes a measured outcome. A measured outcome becomes a verified blueprint.
A blueprint becomes a public document — read by the next farm, the next region, the next country.*



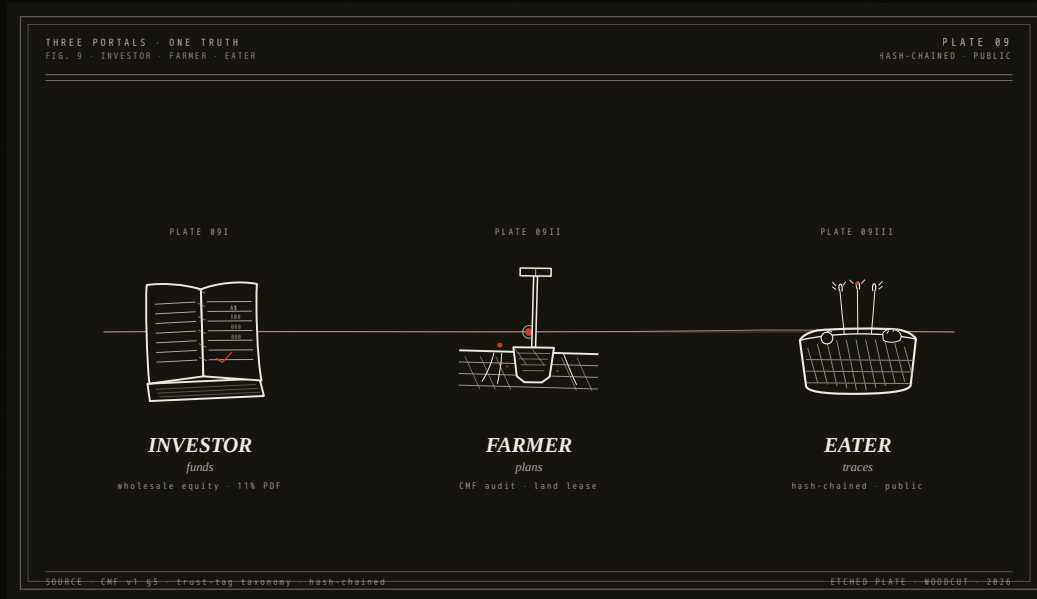
VIII · THE CHOICE

Investors fund. Farmers plan. Eaters trace. One verified record. Different jobs — same truth.

marginalia · three roles read the same hash-chained record – investor funds, farmer plans and writes, eater traces back to the field.

SPEC. 09A	INVESTOR	READS · IM
SPEC. 09B	FARMER	READS · WRITES
SPEC. 09C	EATER	TRACES · QR
SPEC. 09D	RECORD	HASH · V1

FIG IX · THREE-PORTAL LATTICE DIAGRAM · CMF V1 §6 · HASH-CHAINED





IX · THE NAMED HUMAN

Hillview Park Lachlan Graham

“This farm was dead when I got it. I want every farmer in Australia to have what we built here.”

– LACHLAN GRAHAM
HILLVIEW PARK, NSW SOUTHERN TABLELANDS

4th-generation farmer · Australian Farmer of the Year, 2013. Hillview Park · 1,167 ha · Stage 5 audit, now.

SUBJECT

LACHLAN GRAHAM
4TH-GENERATION CUSTODIAN

HOLDING

HILLVIEW PARK · NSW
1,167 HA · STAGE 5 AUDIT

STATUS

LIVE · APR 2026
ZNE-AG CRC PARTNER

RECORD

CADASTRAL TITLE
HASH-CHAINED

FACSIMILE · FIG. 11

SAFE · INDICATIVE

SUBSCRIPTION AGREEMENT — FUTURE-EQUITY INSTRUMENT

TOTAL RAISE	A\$6,000,000
FIRST CLOSE	A\$1,000,000
VALUATION CAP	A\$50,000,000
INSTRUMENT	SAFE · wholesale
JURISDICTION	Australia · CAct s708
ENTITY	Fresh Earth Universe Pty Ltd

✓ executed by founder · countersigned on close

A\$6M total · A\$1M first close · A\$50M cap. Future-equity instrument, wholesale only.

The platform is the offer.

The library is the thesis.

DISCLAIMER · Wholesale investors only (Corporations Act 2001 (Cth) s708(8)/(11)). This is not personal financial product advice and is provided to qualifying recipients for information only. Land Tokens are NOT being issued in this raise – the offering is equity in Fresh Earth Universe Pty Ltd. Capital is at risk; past performance is not indicative of future results. Forward-looking statements are subject to assumptions disclosed in the Information Memorandum and depend on factors outside Fresh Earth's control (RG 170). Read the IM and the Subscription Agreement before deciding.

XII · COLOPHON · THE CLOSE

Give the keys to humanity.

Read the library.

OPEN THE INFORMATION MEMORANDUM →



We are as gods. We may as well get good at it.

– STEWART BRAND
WHOLE EARTH CATALOG · 1968

colophon – Vol I of the Fresh Earth Library was set in Newsreader and DM Mono and printed in archival monochrome. Hillview Park, NSW · 2026.